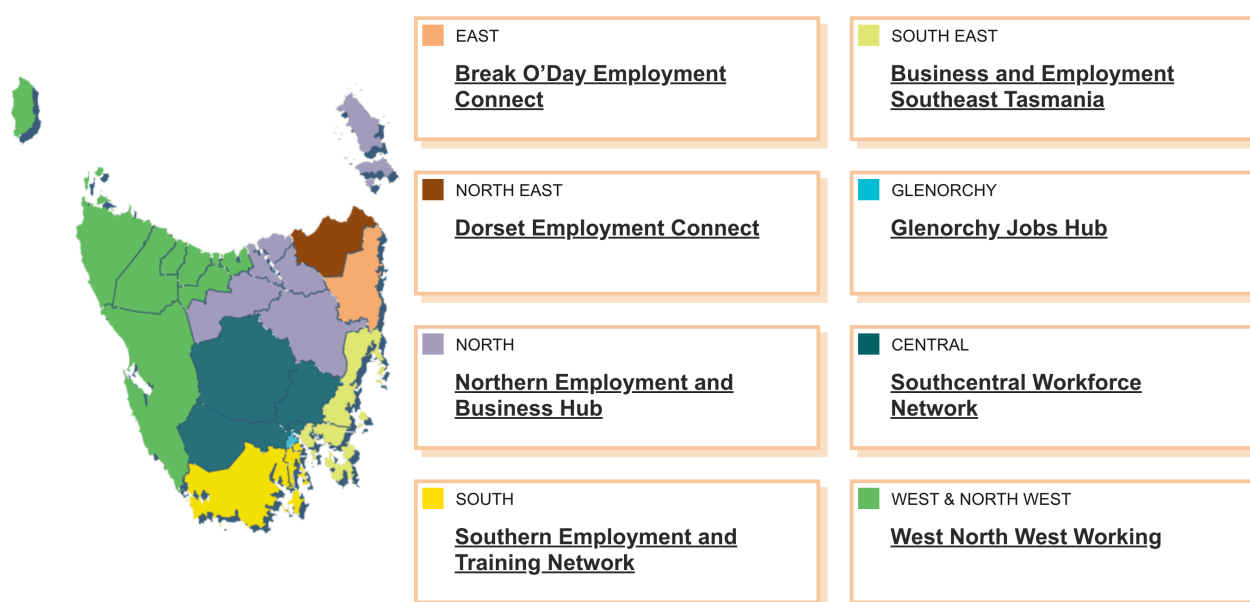


Break O'Day Employment Connect (BODEC) is part of the state-wide network of Regional Jobs Hubs that have been established to help more Tasmanians into work. They bring local employers together with job seekers providing dedicated employment support services including career counselling, advice on how to get job ready, and transport options.

Below are the regional jobs hubs and their geographical boundaries.



Background on Regional Jobs Hubs - BODEC and DEC

Break O'Day Employment Connect (BODEC) was created following community and business consultations on how the labour market was operating in the Break O'Day area and the barriers to employment being experienced. BODEC is about making connections between the people, the information, the services and the opportunities.

- Connections for job seekers looking for employment; someone to help them achieve their goals and support them in addressing their needs.
- Connections for employers, looking for someone to employ and be supported to retain them.
- Connections for ongoing support in navigating services and accessing information.
- Connections for training opportunities that match the need of employers and employees at just the right time in the right place and the way it is delivered.

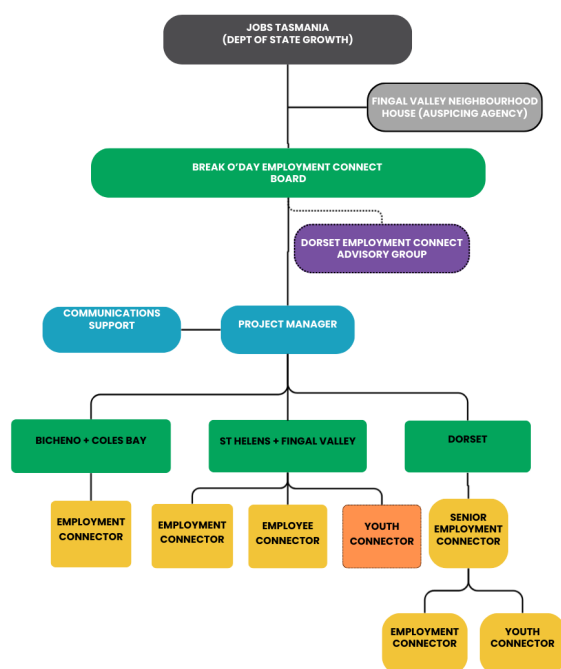
The building and maintenance of connections is about personal interaction and relationships based on trust which, are built over time.

In October 2021 BODEC received funding from the Tasmanian Government to expand its activities beyond the Break O'Day region to include the Bicheno & Coles Bay area to the south and the Dorset Council area to the

north. Since beginning operations, BODEC team members have been providing some assistance to businesses and job seekers in the Bicheno and Coles Bay area. The additional funding enabled BODEC to employ a new team member who is based in this area, to focus on supporting the needs of local employers and job seekers.

During 2022 the planning for the expansion into Dorset was undertaken. This involved extensive stakeholder engagement within the region, and ultimately the development of Dorset Employment Connect, which was opened in early 2023, with two part time team members, and the eventual addition of a third team member for the Youth Connector program.

Regional Jobs Hub Structure



Youth Connector (BODEC) 0.5FTE

The role of the Youth Connector (BODEC) is to provide highly personalised support to the participants of the Project Y program.

The Youth Connector will attract participants to the program and engage with each individual to develop and action activities that lead towards improvements in each individuals education, training and employability skills. This can include:

- Identification of employability strengths and career goals
- Identification of barriers, and providing assistance to find appropriate support
- Assistance with exploring employment, education and career options and pathways
- Creating opportunities for exposure to areas of interest

Assistance with developing the right connections in an industry

Project Y is funded for three years, from 2025 to 2027 and is available on a voluntary basis to anyone aged between 15 and 25. There are no pre-requisites to participation, however those under 18 years require parental/guardian permission.

The project aims to develop work ready skills, address barriers to employment, explore work, education and training opportunities and assist participants to find ongoing and meaningful employment and/or engage in ongoing training and education.

The project relies heavily on relationships with community organisations and stakeholders to provide participants with work exposure and other support services. The delivery of the program adheres to the Child and Youth Safe Organisations Framework

You will be part of a small team based in St Helens, and will be supported by the Project Manager and BODEC Team. You will work closely with the Youth Connector - Dorset, and develop connections with similar roles at the other hubs.

This role is 0.5FTE and there is some flexibility around the days and times of employment. BODEC is currently open 8.30am - 3.00pm Monday to Friday and is located at 48 Cecilia St, St Helens. Some travel to towns in the region, and to Launceston, will be required.

Who will I be employed by?

Funding is from the State Government. The Regional Jobs Hub Network is administered by Jobs Tasmania, a department of State Growth. However, the operational team members are employed through Fingal Valley Neighbourhood House as the auspicing agency for the program. Fingal Valley Neighbourhood House is one of 35 in Tasmania and is governed by a local Board of Management. Neighbourhood Houses are places where people come together and find support, belonging and purpose as they work together to support their local community and make a real difference in people's lives.

Houses are run by the community, for the community and offer a wide range of programs and activities for local people.

Employment conditions are determined and described in the Labour Market Assistance Industry Award MA000099. Specific employment conditions (pay rate and terms of employment) will be contained in individual letters of offer.

How long will the project last?

The project is currently funded until October 2027 under the current funding arrangement. The Regional Jobs Hub Board is focussed on the success of the project and securing ongoing funding is high priority.

How will I be employed?

Positions will be offered on a permanent fixed term basis.

Remuneration Package

The salary is in line with the 2021 Labour Market Assistance Industry Award MA000099 and will recognise the skills and experience of the successful applicant. The Youth Connector attracts a full time salary of \$69,634 per annum. This role is offered as 0.5FTE, at a rate of \$35.24 per hour. Superannuation contribution of 10.5% is payable.

When do applications need to be submitted by?

Applications need to be submitted by 5pm on Wednesday 21 January 2026.

What about Work Health & Safety (WHS)?

Fingal Valley Neighbourhood House places a high value on safety in the workplace and all interested candidates are required to demonstrate an excellent understanding of their obligations with respect to their own safety and the safety of others in and around the workplace. FVNH does not tolerate any behaviour or work practices that do not meet the highest standards of WHS.

Submitting your Application

A complete application will require:

- Current Resume
- Addressing of the Selection Criteria (available on BODEC website)
- Completed Application for Employment Form (available on BODEC website)

For more information please contact Elise Frost, Project Manager at BODEC via elise.frost@bodec.org.au
Completed applications are to be emailed to elise.frost@bodec.org.au